

MPS Catalog Number:

S1 90 80 031 MX AL 019

Date:

01/23/2014

**END FITTINGS**

Tower End Fitting:

Eye (Forged Steel)

Line End Fitting:

Ball (Forged Steel) (ANSI 52-5)

**MATERIAL**

Corona Ring (Tower):

None

Corona Ring (Line):

None

Corona Rings are recommended for applications of 230 kV and above

Number of Sheds:

9 large 10 standard

Rod Diameter:

16 mm

Weight Estimate:

7.7 lbs

3.5 kg

**DIMENSIONAL VALUES**

Section Length (L):

42.3 in

1,074 mm

Rubber Length (X):

30.5 in

775 mm

Standard Shed Height (P1):

1.5 in

38 mm

Large Shed Height (P2):

2 in

51 mm

Projection Ratio (S/P):

-

1.5

Shed Spacing (S):

3 in

76 mm

Dry Arc Distance:

32.8 in

833 mm

Leakage Distance:

85.2 in

2,164 mm

**ELECTRICAL VALUES**

60 Hz Dry Flashover:

327 kV

Min. Withstand:

304 kV

60 Hz Wet Flashover:

295 kV

Min. Withstand:

257 kV

Pos. Critical Impulse Flashover:

566 kV

Min. Withstand:

487 kV

Neg. Critical Impulse Flashover:

605 kV

Min. Withstand:

531 kV

**MECHANICAL VALUES**

Specified Mech. Load (SML):

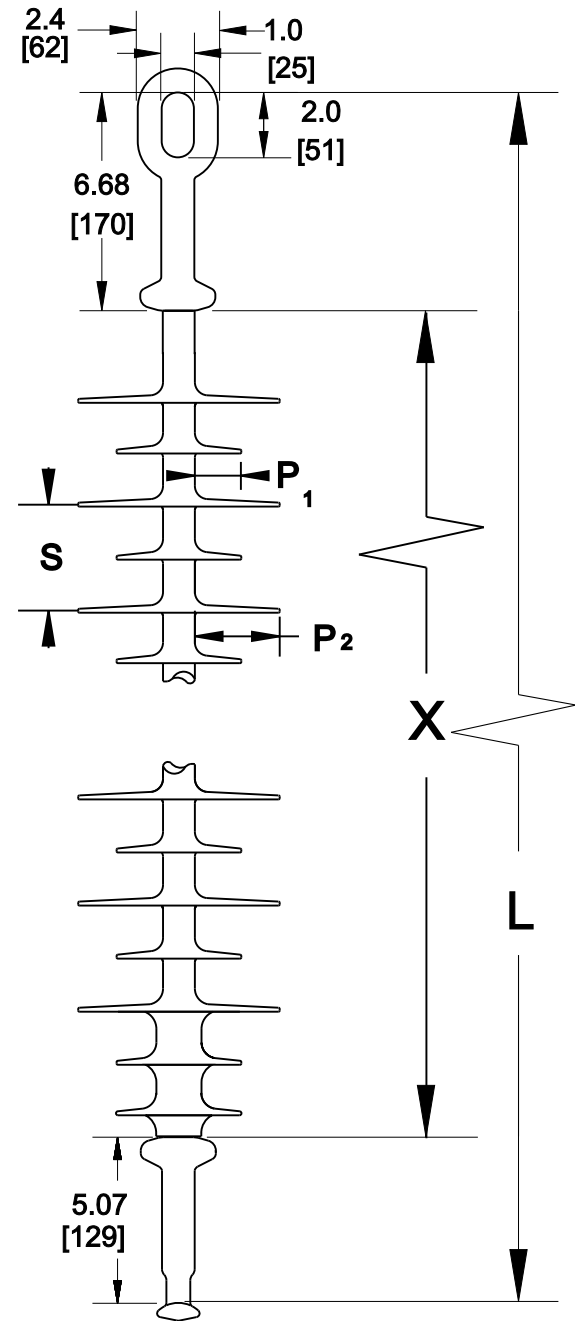
25,000 lbs

111.2 kN

Routine Test Load (RTL):

12,500 lbs

55.6 kN



This drawing contains confidential information that is property of MacLean Power L.L.C ('MacLean'). Use of MacLean's confidential information without MacLean's express written consent is strictly prohibited and may expose you to legal liability. If you believe that you received this material in error, please destroy it or return it to 'MacLean Power, L.L.C., 7801 Park Place Rd, York, SC, 29745, USA.'

Dimensions: inches [millimeters]

Note: Drawing not actual depiction of insulator appearance

Silicone Rubber Sheath & Sheds  
Complies with applicable ANSI and IEC standards.